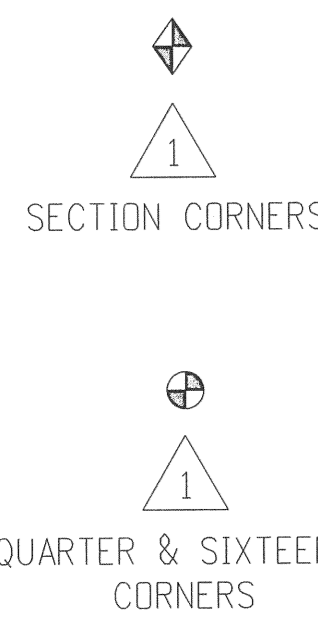


Date	Description	Initials

URS  
 8181 East Tullis Avenue  
 Denver, CO 80231-2579  
 (303) 740-2600  
 Fax (303) 694-3946

Land Survey Control Diagram  
 Monument Coordinate Tables  
 Project Number: STA 0092-020  
 Project Location: SH 9 Grand County Safety Improvements  
 Grand Co. M.P. 127.40 (Summit County Line) to M.P. 136.60  
 Project Code: Last Mod. Date: 01/28/14  
 Sheet No. 1



FOUND ALIQUOT MONUMENT COORDINATE TABLE

Point No.	Northing(ft)	Easting(ft)	Description
100	223472.57	149745.72	2.5" BRASS CAP ON 1.75" METAL PIPE
101	223517.68	144445.41	2.5" BRASS CAP ON 2" METAL PIPE
102	224839.57	144464.85	2" ALUMINUM CAP ON #6 REBAR
103	226160.92	144484.06	2.5" BRASS CAP ON 1" METAL PIPE
104	227486.96	144503.39	2" ALUMINUM CAP ON #6 REBAR
105	227491.33	143176.76	2" ALUMINUM CAP ON #6 REBAR
106	228780.30	149828.64	STONE
107	228810.49	143193.00	2" ALUMINUM CAP ON #6 REBAR
108	228812.93	144522.90	STONE
109	228833.18	141869.76	3.25" BRASS CAP ON 2.5" METAL PIPE
110	228860.82	139227.80	ANGLE IRON IN MOUND
111	231455.99	144549.24	2" ALUMINUM CAP 11415
112	231480.92	141891.60	YPC ILLEGIBLE 6207
115	232819.17	140584.11	2" ALUMINUM CAP
116	234132.14	141920.18	STONE
117	236793.70	141951.67	2" AC 11415
118	236805.45	139305.57	STONE
119	239415.88	141983.58	1" PIPE IN MOUND
120	239433.76	139323.75	2" AC 11415 "2000"
121	244734.63	139353.96	2" AC 11415 "2000"
124	250033.04	139406.49	3 1/4" BLM AC "T1S R80W 9-10-15-16 1996"
125	250071.75	136756.15	3 1/4" BLM AC "T1S R80W 1/4 9-16 1996"
126	255394.98	136796.42	3 1/4" BLM AC 1/4 4-9 1986"

FOUND ALIQUOT MONUMENT COORDINATE TABLE

Point No.	Northing(ft)	Easting(ft)	Description
127	255415.92	135880.78	3 1/4" BLM AC 1986 "MP"
128	255425.22	135472.91	3 1/4" BLM AC "W 1/16 4-9 1986"
129	255447.26	134505.65	1 1/2" AC "POL 527.4"
130	258148.79	134122.47	3 1/4" BLM AC "1/4 4-5 1986"
131	259350.91	134144.34	2 1/2" AC 11415
132	260309.11	137018.74	3.25" BRASS CAP ON 3" METAL PIPE
133	260312.13	136819.03	3.25" ALUMINUM CAP ON 2.5" ALUMINUM PIPE
134	260351.39	134358.87	2.5" BRASS CAP ON 2" METAL PIPE
135	260354.69	134175.11	3.25" ALUMINUM CAP ON 2.5" ALUMINUM PIPE
136	260357.23	134175.42	2.5" BRASS CAP ON 2" METAL PIPE
137	263195.50	129004.32	3.25" BRASS CAP ON 2.5" METAL PIPE
138	263116.36	131626.06	3.25" BRASS CAP ON 2.5" METAL PIPE
139	265585.14	131715.88	3.25" BRASS CAP ON 2.5" METAL PIPE
140	265612.76	130395.38	3.25" ALUMINUM CAP ON 2.5" ALUMINUM PIPE
141	265639.48	129121.90	3.25" BRASS CAP ON 2.5" METAL PIPE
142	265662.47	127748.02	3.25" ALUMINUM CAP ON 2.5" ALUMINUM PIPE
144	268153.73	131863.95	3.25" BRASS CAP ON 2.5" METAL PIPE
145	270654.73	132013.70	3.25" BRASS CAP ON 2.5" METAL PIPE
146	270896.88	126775.71	3.25" BRASS CAP ON 2.5" METAL PIPE
147	271837.75	132047.00	3.25" ALUMINUM CAP ON 2.5" ALUMINUM PIPE
148	271930.37	130776.85	3.25" ALUMINUM CAP ON 2.5" ALUMINUM PIPE
149	273021.81	132079.65	3.25" BRASS CAP ON 2.5" METAL PIPE
150	274370.79	133568.39	2" ALUMINUM CAP ON #6 REBAR
151	274415.52	132249.74	3.25" ALUMINUM CAP ON 2.5" ALUMINUM PIPE
152	274626.37	129748.93	3.25" ALUMINUM CAP ON 2.5" ALUMINUM PIPE
153	275809.33	132420.38	3.25" BRASS CAP ON 2.5" METAL PIPE
154	275928.84	129875.23	3.25" BRASS CAP ON 2.5" METAL PIPE

Date	Description	Initials

URS  
 8181 East Tullis Avenue  
 Denver, CO 80231-2579  
 (303) 740-2600  
 Fax (303) 694-3946

Land Survey Control Diagram  
 Monument Coordinate Tables  
 Project Number: STA 0092-020  
 Project Location: SH 9 Grand County Safety Improvements  
 Grand Co. M.P. 127.40 (Summit County Line) to M.P. 136.60  
 Project Code: Last Mod. Date: 01/28/14  
 Sheet No. 2



FOUND R.O.W. MONUMENT COORDINATE TABLE

Point No.	Northing(ft)	Easting(ft)	Description
200	224309.60	147899.45	3" COOH BC "ROM MARKER" IN CONC
201	224543.97	148143.25	3" COOH BC "ROM MARKER" IN CONC
202	224861.93	148058.00	3" COOH BC "ROM MARKER" IN CONC
203	227039.29	148299.85	3" COOH BC "ROM MARKER" IN CONC
204	228647.85	144716.43	3" COOH BC "ROM MARKER" IN CONC
205	230382.51	143594.53	3" COOH BC "ROM MARKER" IN CONC
206	230509.75	143908.07	3" COOH BC "ROM MARKER" IN CONC
207	232584.44	142408.88	3" COOH BC "ROM MARKER" IN CONC
208	234845.27	140752.00	3" COOH BC "ROM MARKER" IN CONC
209	234939.67	140899.13	3" COOH BC "ROM MARKER" IN CONC
210	237878.85	139708.28	3" COOH BC "ROM MARKER" IN CONC
211	237803.59	139532.24	3" COOH BC "ROM MARKER" IN CONC
212	239872.17	139270.01	3" COOH BC "ROM MARKER" IN CONC
213	239893.45	139418.52	3" COOH BC "ROM MARKER" IN CONC
214	242737.53	138854.33	3" COOH BC "ROM MARKER" IN CONC
215	242758.99	139002.51	3" COOH BC "ROM MARKER" IN CONC
216	243774.41	138884.29	3" COOH BC "ROM MARKER" IN CONC
217	245030.32	138497.42	3" COOH BC "ROM MARKER" IN CONC
218	245229.62	138646.33	3" COOH BC "ROM MARKER" IN CONC
219	247763.41	138085.43	3" COOH BC "ROM MARKER" IN CONC
220	247796.61	138231.42	3" COOH BC "ROM MARKER" IN CONC
221	250330.41	137526.14	3" COOH BC "ROM MARKER" IN CONC
222	251687.29	137245.10	3" COOH BC "ROM MARKER" IN CONC
223	251689.03	137342.56	REBAR IN BROKEN CONCRETE
224	254038.56	136335.87	3" COOH BC "ROM MARKER" IN CONC
225	254065.00	136453.91	1 1/4" YPC 28294
226	254078.01	136427.72	3" COOH BC "ROM MARKER" IN CONC
227	254107.03	136435.83	REBAR IN BROKEN CONC
228	256380.91	135330.15	REBAR IN BROKEN CONC
229	256420.33	135422.09	3" COOH BC "ROM MARKER" IN CONC
230	260300.72	131126.68	3" COOH BC IN CONC ROW MARKER
231	260364.27	131285.98	3" COOH BC IN CONC ROW MARKER
232	265554.57	130826.90	3" COOH BC IN CONC ROW MARKER
233	265560.15	130491.23	3" COOH BC IN CONC ROW MARKER 135.1
234	268201.34	130701.50	3" COOH BC IN CONC ROW MARKER
235	268206.31	130563.40	3" COOH BC IN CONC ROW MARKER 135.6
236	273557.18	131675.42	3" COOH BC IN CONC ROW MARKER STA 61+00
237	273557.79	131695.12	3" COOH BC IN CONC ROW MARKER E299
238	273753.20	131550.42	3" COOH BC IN CONC ROW MARKER STA 79+00
239	273851.75	131549.17	3" COOH BC IN CONC ROW MARKER STA 79+00
240	273938.51	131672.22	3 1/4" CDOT AC 27272 PT No 378 BR0002 015
241	273996.75	131502.36	3 1/4" CDOT AC 27272 PT No 391 BR0002 015
242	274009.67	131534.61	3" COOH BC IN CONC ROW MARKER STA 76+00.3
243	274137.12	131684.27	3 1/4" CDOT AC 27272 PT No 375 BR0002 015
244	274291.85	131498.99	3 1/4" CDOT AC 27272 PT No 399 BR0002 015
245	274327.42	131671.15	3 1/4" CDOT AC 27272 PT No 374 BR0002 015
246	274338.54	131513.02	3 1/4" CDOT AC 27272 PT No 389 BR0002 015
247	274460.73	131714.51	3 1/4" CDOT AC 27272 PT No 392 BR0002 015
248	274477.54	131514.44	3 1/4" CDOT AC 27272 PT No 363 BR0002 015

FOUND BOUNDARY MONUMENT COORDINATE TABLE

Point No.	Northing(ft)	Easting(ft)	Description
300	228819.73	144733.92	1 1/4" COOT YPC 28294
301	231471.72	142915.90	# 5 REBAR NO CAP (DISTURBED)
302	231826.86	142687.80	1 1/4" RPC 10741
303	231837.20	142709.35	1 1/4" RPC 10741
304	232083.69	142532.60	#5 REBAR NO CAP
305	232090.82	142546.24	1 1/4" RPC 10741
306	232501.17	142282.18	#5 REBAR NO CAP
307	232629.11	142111.50	1 1/4" RPC 10741
308	232617.84	141807.88	1 1/4" RPC 10741
309	232925.81	141921.29	1 1/4" RPC 10741
310	234471.12	141201.85	1 1/4" RPC 10847
311	235019.86	140272.34	2" AC 11415
312	236033.53	140227.34	2" AC 11415
313	237072.73	139852.70	1" YPC 10847
314	237169.43	139846.81	#4 REBAR NO CAP
315	237164.50	139839.99	1.5" AC 11415
316	238124.35	139701.07	1.5" AC 11415
317	242071.22	138508.68	1 1/4" RPC 10974
318	243532.05	138739.82	1 1/4" RPC 10974
319	243594.54	138712.90	#4 REBAR NO CAP
320	243624.28	138700.78	1" YPC 10847
321	244613.79	138555.68	1.5" AC 11415
322	244682.90	138559.39	#4 REBAR NO CAP
323	244742.81	138564.61	#4 REBAR NO CAP
324	244757.88	137822.50	2" AC JAWAD 11415
325	245073.55	138517.01	1" METAL PIPE NO CAP
326	246342.46	138544.87	1" YPC 9059
327	257484.24	134978.25	2" AC 11415
328	257650.92	134902.00	2" AC 11415
329	258078.06	134142.29	1 3/4" RPC 10974
330	259350.91	134144.34	2" AC JAWAD 11415 "55 L1 / 54 L8 1997"
331	260610.87	130480.31	1 1/4" RPC 13428
332	260689.25	130527.83	2" ALUMINUM CAP



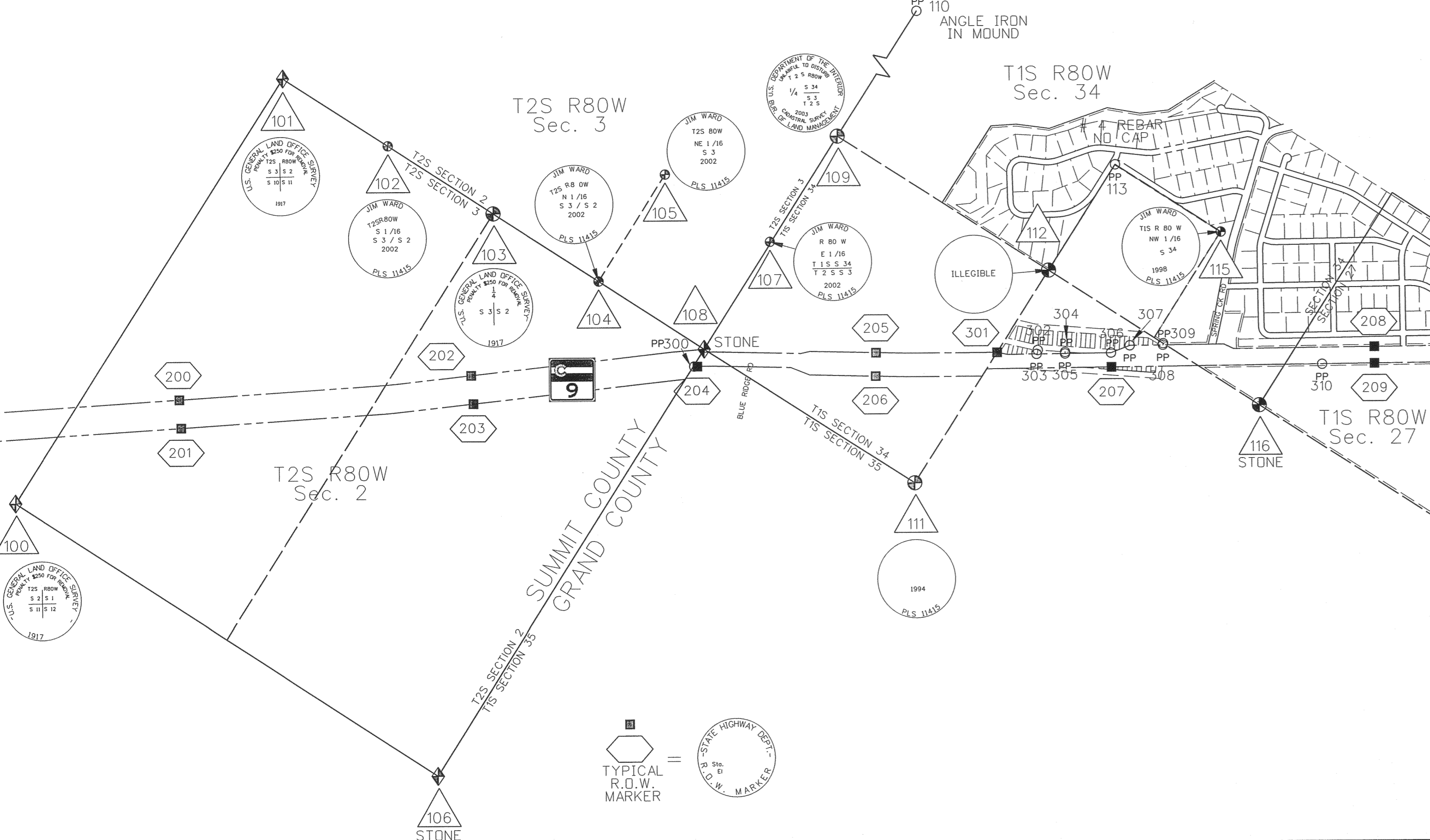
STATE OF COLORADO  
 County of GRAND  
 Filed for record this 25th  
 day of January 2018  
 at \_\_\_\_\_ o'clock P.M.  
 Recorded in Book \_\_\_\_\_ Page \_\_\_\_\_

Shirley A. Lawrence  
 Paula Mack  
 Recorder  
 \$888.00

Date	Description	Initials

URS  
 8181 East Tullis Avenue  
 Denver, CO 80231-2579  
 (303) 740-2600  
 Fax (303) 694-3946

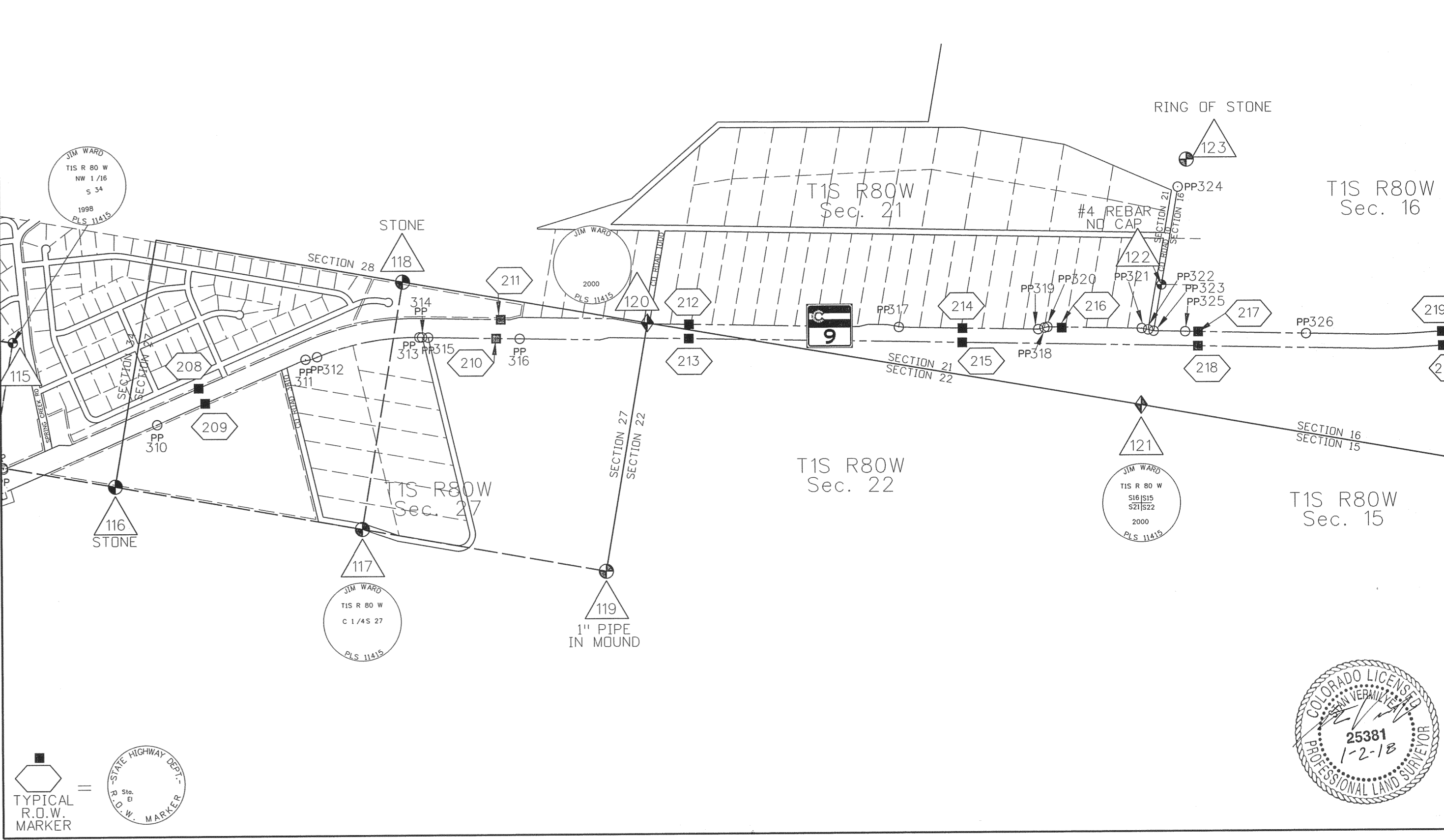
Land Survey Control Diagram  
 Plan Sheet  
 Project Number: STA 0092-020  
 Project Location: GRAND COUNTY SAFETY IMPROVEMENTS  
 GRAND COUNTY MP 127.40 (SUMMIT COUNTY LINE) TO MP 136.60  
 Project Code: Last Mod. Date: 01/28/14  
 Sheet No. 3



Date	Description	Initials

URS  
 8181 East Tullis Avenue  
 Denver, CO 80231-2579  
 (303) 740-2600  
 Fax (303) 694-3946

Land Survey Control Diagram  
 Plan Sheet  
 Project Number: STA 0092-020  
 Project Location: GRAND COUNTY SAFETY IMPROVEMENTS  
 GRAND COUNTY MP 127.40 (SUMMIT COUNTY LINE) TO MP 136.60  
 Project Code: Last Mod. Date: 01/28/14  
 Sheet No. 4



LS 2147